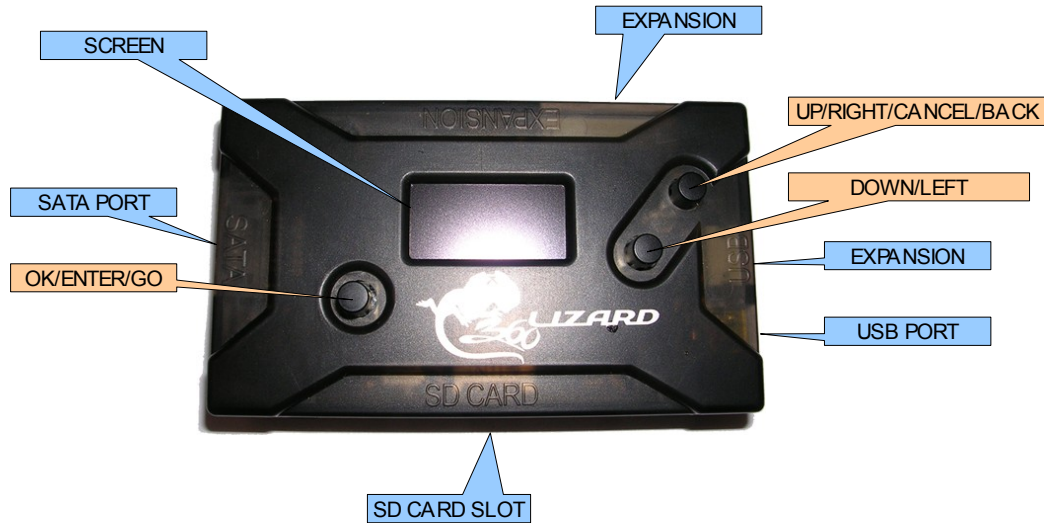


1.0 The Lizard Hardware



1.1 Menu Navigation.

To navigate the different menu options on the Lizard you use the RIGHT or LEFT buttons, if you wish to enter a sub-menu such as “Lite-On Drive Menu” for example move to that menu option and then press the OK/ENTER button to enter that sub-menu.

To select any option or sub-menu you just use the OK/ENTER button while the option or sub-menu is highlighted to access it or launch the function.

To Return to a Parent Menu, just press and hold the UP button for 2 seconds and then release it.

1.2 Screen Protection.

The LCD Screen on the Lizard can be affected if left displaying the same image for too long, so we went ahead and built in a special screen saver mode to protect the LCD screen on the Lizard. After 20 seconds of displaying the same image the Lizard will automatically go into screen saver mode and disable the LCD until a button is pressed again. We are also working on a moving background image for the Lizard while the LCD is in operation to protect the LCD screen.

Here are some tips to help protect the LCD screen on your Maximus Lizard:

- Avoid leaving your Lizard unattended for long periods of time while turned on
- If not using your Lizard disconnect the power to it
- Dont put heavy stuff over the lizard than can press the buttons or break the screen, if you will not use it unplug it and keep it stored on its retail box.

2. PC Setup

In this section of the manual we are going to explain how to prepare your PC or Laptop by installing the Lizard Toolbox application & drivers needed by the PC or Laptop to connect and talk to the Lizard. The Lizard Toolbox is a program very much like Jungle Flasher but made just for use with the

Maximus Lizard. This is the software that you will use to retrieve firmware files through the Lizard from the drive onto your PC or Laptop, then prepare the custom firmware's with keys imbedded ready for the Lizard to flash back to the drives. Once that part of the process has been done you will have a custom firmware file with your key imbedded ready for the Lizard to flash back to your drive.. For those already knowledgeable with Jungle Flasher you should not have too many problems using this software as the principles are the same.

Note the standalone mode for the Lizard will be implemented in the future with a firmware update, the standalone mode means you wont need a PC or Laptop at all to carry out the extraction of the key or the imbedding of the key into the custom firmware, it will all be able to be done using a MicroSD memory card. You would do a dump of the drives original firmware onto the MicroSD memory card and also have a copy on the MicroSD memory card of the custom firmware's you plan to use, you would then follow a procedure yet to be implemented where you would select the firmware file you just dumped from the drive onto the MicroSD memory and then the custom firmware file you wish to imbed your key into and the Lizard will prepare a custom firmware file with your key imbedded to flash back to the drive right from the MicroSD memory card. More info on this standalone procedure will be announced once the firmware update to enable this feature is close to release.

Now let's move onto installing the drivers and software required for the Lizard to communicate with your PC or Laptop and of course the Lizard Toolbox itself.

2.1 Download and Install USB Drivers.

The USB drivers need to be installed so the PC or Laptop knows how to communicate with the Lizard, we recommend you use the self-installer executable from the link below. You just need to run the file and it will proceed to install the USB drivers required by your PC or Laptop to communicate with the Lizard through the Lizard Toolbox software.

http://www.ftdichip.com/Drivers/CDM/CDM20814_Setup.exe

If you find you have any problems with the self-installing USB package we have linked to the page below where you can download the driver files themselves and you can do a manual install, note this only needs to be done if the self-installer above does not work correctly on your PC or Laptop, this is only a backup option and 99% of people will not need to manually install the drivers. Note if you do use the manual method you will need to select either 32-bit or 64-bit depending on your operating system.

<http://www.ftdichip.com/Drivers/VCP.htm>

2.2 Download and Install .NET 4.0 Framework.

The next step is to make sure you are running .NET 4.0 Framework which is also required for the Lizard to communicate with the Lizard Toolbox software, below is a link to the web installer page which you download and run and it will update or install .NET 4.0 Framework for you on your PC or Laptop.

<http://www.microsoft.com/downloads/en/details.aspx?FamilyID=9cfb2d51-5ff4-4491-b0e5-b386f32c0992>

Alternatively you can download the full install package for .NET 4.0 Framework from the link below.

Note you only need to use this second method if you have problems using the web installer above, or if you would not mind having the complete package laying around if you plan to install the software for the Lizard on a couple of computers and don't want to have to wait for it to download each time.

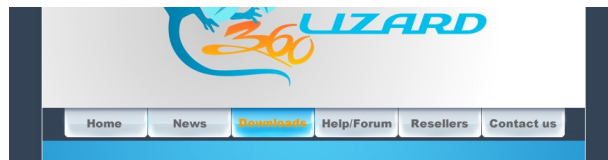
<http://www.microsoft.com/downloads/en/details.aspx?FamilyID=0A391ABD-25C1-4FC0-919F-B21F31AB88B7>

Once you have installed .NET 4.0 Framework it would be a good idea to reboot your computer before following the next steps in this guide.

2.3 Download and Install Lizard Toolbox and its components.

Now it's time to download and install the Lizard Toolbox software package, this can be found in the downloads section of the official Lizard website on the link below.

<http://www.360lizard.com/website/downloads.php>



Before you download create a folder on your Desktop called "Lizard Toolbox" and then go ahead and download the latest version of the Lizard Toolbox into this folder. Note that the package will be compressed with WinRAR, for those not familiar with RAR files they are a form of compression to reduce the size of software packages for faster downloading. If you don't have WinRAR installed on your PC it can be downloaded from the link below, once downloaded install it.

<http://www.rarlab.com/download.htm>

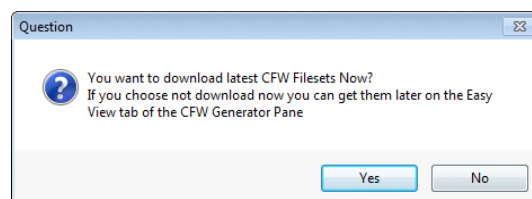
Note WinRAR supports many languages and just download and install the one that's right for your country and also 32-bit or 64bit depending on your operating system. Most people will know what WinRAR is, but we decided to add this info into our manual for those that are new to all of this and give that little bit more assistance.

OK now that you have WinRAR installed open up your Lizard Toolbox folder and you will see the .rar package you downloaded, we recommend you right click on the file and use the "Extract Here" option, once selected you will see all the files for the Lizard Toolbox appear in your folder.

Once you have completed the steps above you should now see the Lizard_Toolbox.exe file, this is the file you use to load up the Lizard Toolbox software, go ahead and click on the file and the Lizard Toolbox will load.

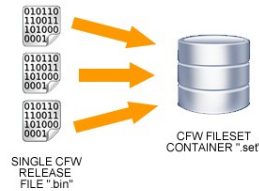


Being the first time you have run the Lizard Toolbox you should see a pop up box appear that will prompt you to download the latest custom firmware & original firmware files package.

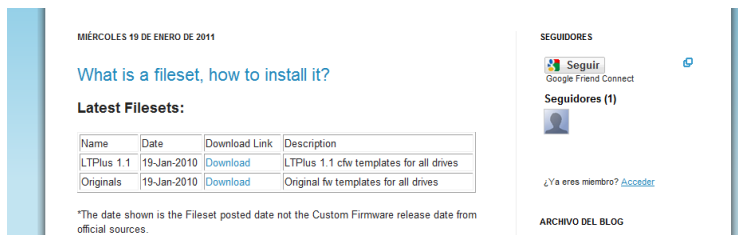


Make sure you are connected to the net and click “Yes” and the Lizard Toolbox will automatically open a browser and take you to the page where you can download the firmware package file which you will need to save in the CFW_templates folder.

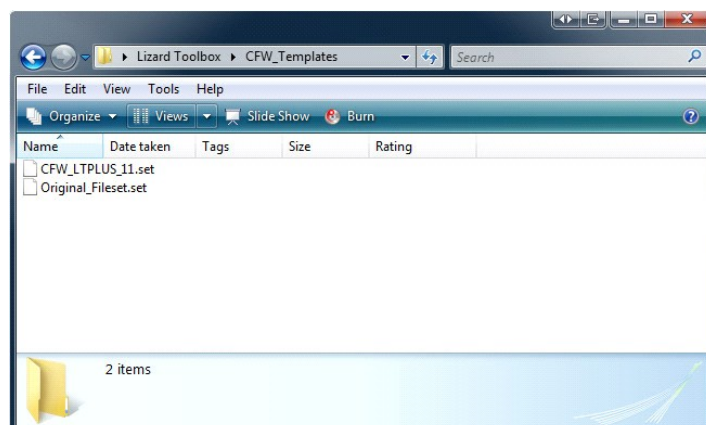
Note we have done this slightly differently and all custom firmware’s are stored in a single package file, this will save confusion of having tons of different custom firmware files stored individually and people not knowing which are the latest etc, with this method of having all the firmware files stored neatly in a single file package you will always know your firmware files are up to date and when a new firmware is released or updated the Lizard Toolbox will prompt you to download a new firmware package and will replace the old one, a much simpler and neater way of storing and organizing your custom firmware files.



Once the web page has loaded to the firmware blog page you will see downloads for the custom firmware file package and also the original firmware files packages, go ahead and download both files to you Lizard Toolbox\CFW_Templates folder.



Once done you will see two .rar files that you want to right click on and select the “Extract Here” option once again. Once this has been completed on both .rar files both the custom firmware & original firmware files packages have been installed for the Lizard Toolbox to use. You can now delete the two .rar files or copy them somewhere else as a backup if you need them for another PC. Once this has been done your Lizard Toolbox\CFW_Templates folder should look like the below.



Once you have completed the download and install of the firmware package files please close the Lizard Toolbox application and re-start it, if the all the processed above have been completed correctly the pop up box asking to download the firmware packages will not appear and this means the Lizard Toolbox is installed and ready to go. Take note of the web address below which is a direct link to the firmware blog, you can check it from time to time for any updated firmware packages and follow the same steps you just did to install the first firmware packages for any newly released ones.

<http://cfwfileset.blogspot.com>

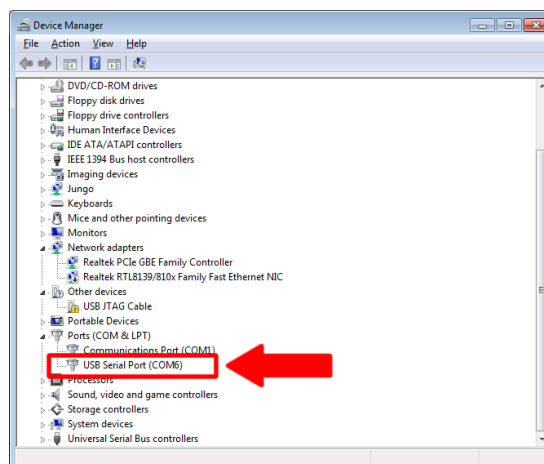
2.4 Plug in your Lizard device

Now it's time to connect your Lizard to your Computer to check all of the installation processes above have been completed successfully and to check communication with the Lizard to your Computer.

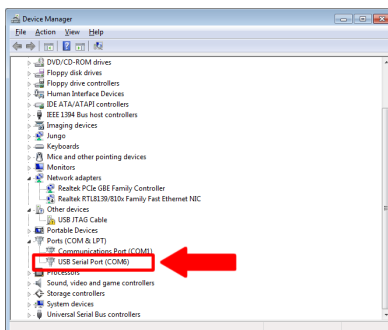


Connect the Lizard to any USB port on your computer, once that has been done windows should automatically install the drivers for the Lizard, if it doesn't and asks for a driver location go back to step 2.1 in this guide and download the manual USB driver installation package and unzip the drivers into a folder on your desktop and then point windows to that folder to find the driver and it should then complete the installation of the Lizard. If you don't see Image on the Lizard screen DONT PANIC, keep reading, its possible to take some seconds to Windows pickup the driver of the device and in that time the Lizard screen is turned off. If a reasonable time has elapsed then read the notes below (in red) for possible troubleshooting.

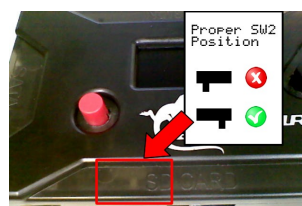
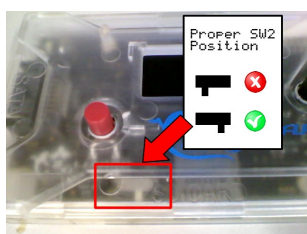
Once that has been done open up your Device Manager and check the "Ports (COM & LPT) tab and you should see a newly installed USB Serial Port (COM6) for example, note the number of the port may change depending on what you have connected to the PC. You need to know which port your Lizard actually is, so you can disconnect the Lizard and this port should disappear from Device Manager, re-connect the Lizard and take note of the port number that displays when it shows back up in Device Manager.



Note: In case you don't get Image on the screen it could be possible you have not installed the Windows Drivers, please read back to the drivers section. If you think the drivers are not the problem go to Device manager and check if the serial port is listed there.



If you cannot see a new serial port listed like in the picture then its possible the internal Switch SW2 is moved from its position. You can see through the case to check the position (on black cases is hard to see but still possible). Make sure the position of the switch is same as the next pictures.



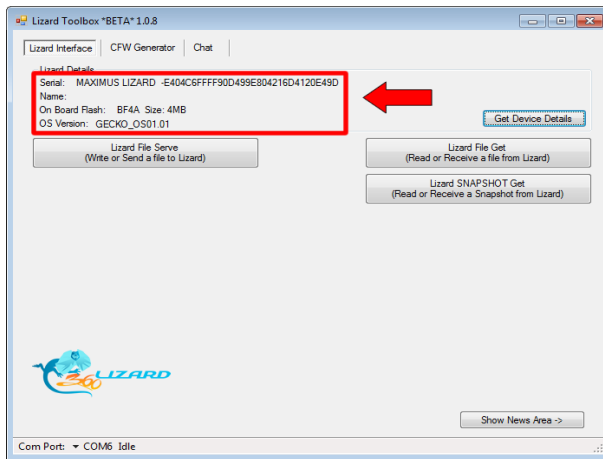
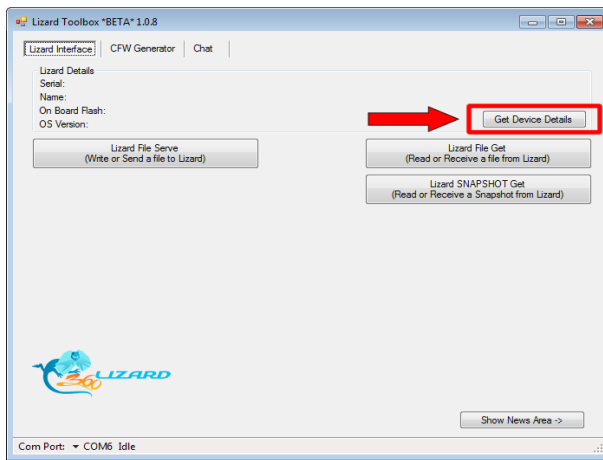
In case the switch is on the Wrong position you will need to remove the top cover of the lizard to flip it. Take extra care doing it as the screen flex board is very fragile.

Now that you know which port your Lizard is using, go ahead and load up the Lizard Toolbox once again and make sure to select the appropriate COM port on the bottom left hand side of the program, in the case of our setup here the Lizard is using COM6 and so in the Lizard Toolbox software we would select COM6 as the port our Lizard is going to communicate with our Computer.

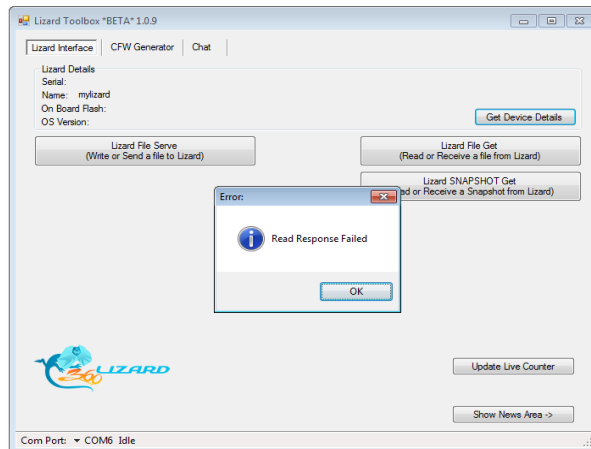
Once you have selected the correct COM port for your Lizard go ahead and click the "Get Device



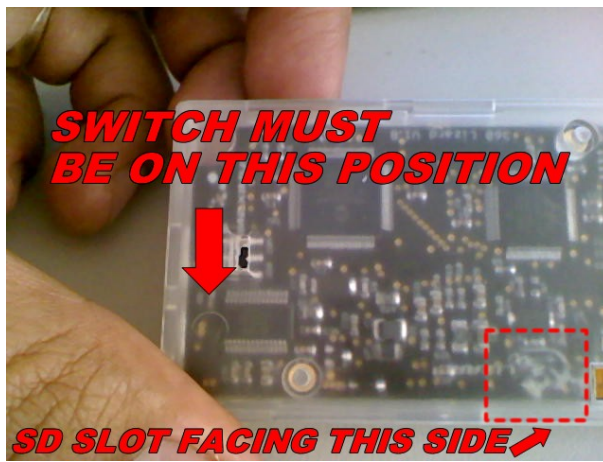
Details" button on the top right of the program, if everything is working correctly you will see data display in the "Lizard Details" box on the top left and you have now successfully setup not only all the software required for the Lizard Toolbox but also the communication ports for the Lizard to talk with the PC & Laptop via Lizard Toolbox.



If you get the following error "READ RESPONSE FAILED"



That error means the bottom switch could be flipped to the wrong side, please UNPLUG your Lizard device and make sure the switch on the bottom is pointing like in the following picture. You can use a small object like a clip or needle to flip it. Please Note the required force to move it should be minimal dont force it otherwise you could break the pole.



3. Keep Lizard Software Updated

Its important to bookmark the Lizard website download page so you can check for updates on the Lizard firmware, the manuals, the Filesets, etc. Make sure you always run the latest stuff, if you found something on the Lizard that don't match with the Manual, its more likely you don't have something updated. The best way to get notified from Important updates is just follow us on twitter #maximus_lizard



The Lizard firmware is called GECKO, and is 100% update-able, that means your device never get obsolete, even with new Dvd drives around all that is required is update on the code and according to specific situations any new accessory. Please follow the next guide to learn how to download and apply updates to your Lizard device.

3.1 Installing the Lizard Firmware Updater application.

Before download the Lizard Firmware Updater application make sure you have installed the .NET 4.0 Framework. If you follow the guide of the first section on this manual to install the Lizard Toolbox then you are done. If not, read back and install the framework.

Now go to Lizard website under download section here:

<http://www.360lizard.com/website/downloads.php> , get the latest version of the Lizard Firmware Updater application, download it and unrar/unzip on any folder on your PC, for simplicity we will assume you unzip on **c:\LizardFWUpdater** but can be on any location you want.

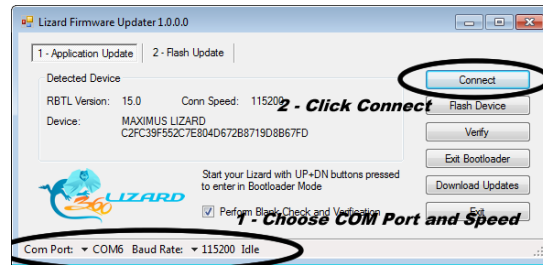
Note: The Lizard Firmware Updater application connects on-line to grab the Lizard updates, so make sure on the PC you will use to update your Lizard have on-line access.

3.2 Connecting the Lizard in Update mode

In order to be able to update the Lizard firmware you need first to enter into UPDATE mode, what you need to do is simply plug the lizard to the USB cable but make sure you are holding the UP and DOWN buttons while doing. If done properly Lizard will start with RED button light on and should not be information on the Lizard screen.



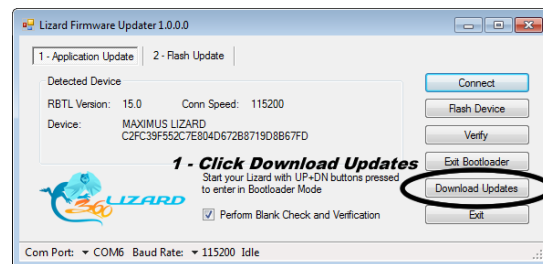
Now open the Lizard Firmware Updater application, on the bottom left corner choose the proper COM port assigned to your Lizard. If you don't know it its likely you skipped the previous section of this manual, please read back. Make sure the speed is set to **115200** Then Click Connect.



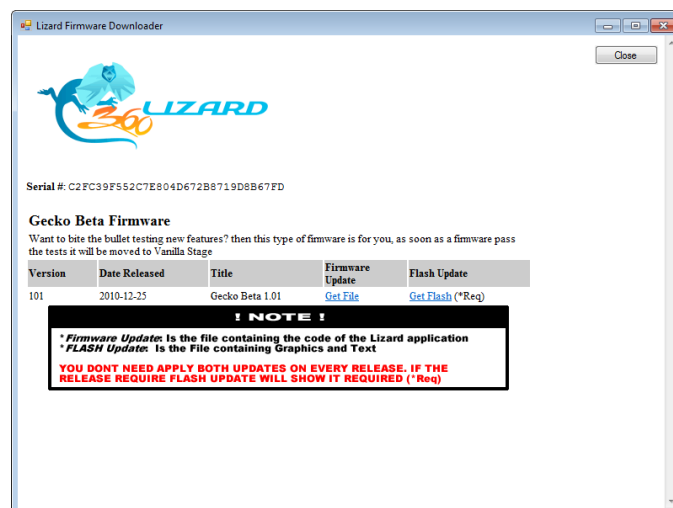
If all OK then you should see Serial Number of the device shown on the window.

3.3 Downloading Updates

Click on the **Download Updates** Button



That will take you to a window where you can see the Releases available for your Lizard



Now click on the Get File and Get Flash links, then store the files somewhere on your PC, please take note the location where you store them.

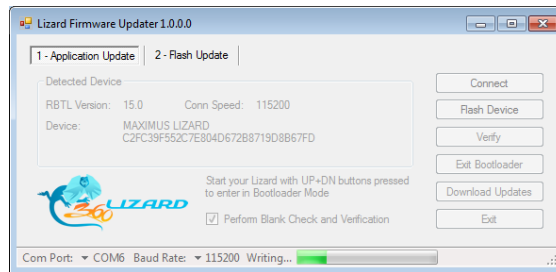
Note: There are 2 files required, one to update the application (Firmware update), the other is to update semi-static data, text and icons (Flash Update). Not all the time both updates are required, please note the (*Req) small comment aside the Get Flash link, that indicate if the flash update is mandatory.

When finished downloading the files just click CLOSE to return previous screen.

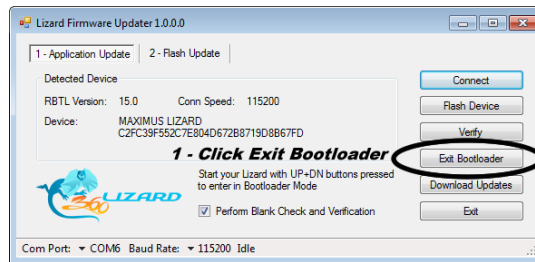
3.4 Apply Firmware Update

Click on **Flash Device** then choose the first file you download (the one named with serial number of your lizard). The flashing procedure start immediate, it could require several minutes to complete.

Note: Make sure every update you apply to your lizard you only download through the Firmware Updater application. Don't take files send by a friend or shared on public sites, we could not warn you more. Download your own file. Any wrong file could render your lizard inoperable.



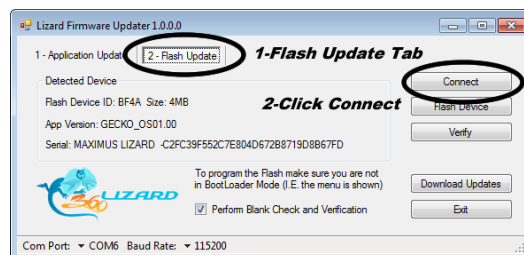
When flashing procedure finished just click on the Exit Bootloader button. The Lizard should automatically restart and you should see it boot with initial logo on screen.



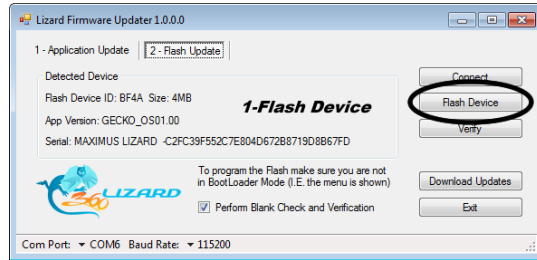
Before proceed with Flash Update its recommended you Unplug and Replug the Lizard Device and look for the Logo starting, if the logo on Lizard dont start it means you have a problem maybe flashed a wrong .cex file. Remember the .cex file are exclusive for each Lizard you cannot take one and apply over the other. If this happened you just Unplug it and Replug it with buttons pressed and repeat the Application Update with the proper .cex file

3.5 Apply Flash Update

Now, if there was an Flash Update on the Release (not all releases require a Flash Update) go to the Flash Update tab. When there, click on the Connect Button, this will connect you to Lizard application



Now click on Flash Device button and choose the 2nd file you downloaded, it should be called "extflash.bin". The flashing should auto-start, please wait till finish.

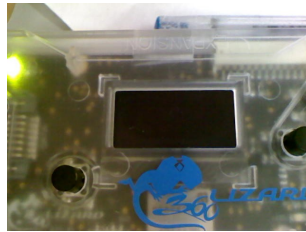


After finish just replug your lizard, all changes have been applied.

3.6 Problems Updating the FW

If you have problems updating the firmware of the lizard device read this section maybe is something you can solve yourself.

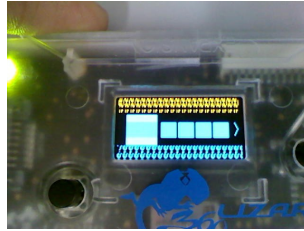
Problem: No image immediate after Application Update. If after apply the Fw update you don't get any information on the screen it means the update has not completed properly. Or maybe you flashed a file that does not belong to your Lizard device.



Solution Suggested:

- Unplug and Replug Lizard pressing the UP+DOWN buttons to enter in bootloader again.
- Re-download the FW update file (.cex) and re-apply.
- Make sure you use the .cex that you downloaded for that device (serial number of Lizard must match the file name of the .cex file)

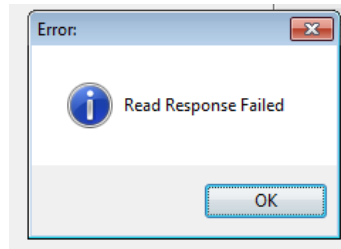
Problem: Alien Screen. The symptom is after update all icons and text looks like garbage, this could be due to a failure in the Flash Update stage.



Solution Suggested:

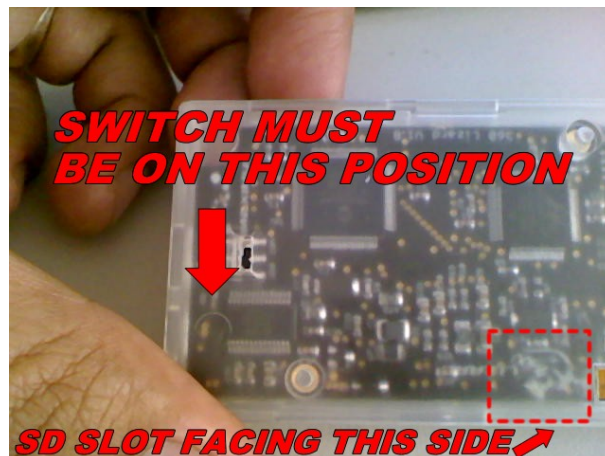
- Make sure you are using Latest FW Updater application from the downloads page
- Unplug and Replug Lizard
- Restart the FW updater application
- Go direct to the tab 2-Flash Update
- Connect to Lizard (Lizard should not be in bootloader mode for the tab 2)
- Re-download the extflash.bin file for the release you are upgrading
- Flash again the extflash.bin you just download
- If problem persist please try to update the drivers again and if all else fail try on another PC.

Problem: Read Response Failed. This problem occurs mainly on Tab 2-Flash Update, after the Application update has been applied. Most of the time it just means that you are still in bootloader mode.



Solution Suggested:

- Unplug and Replug Lizard without pressing any button (to avoid enter in bootloader mode), wait a couple of seconds till the initial logo is removed
- Make sure Lizard is OUT of bootloader mode (Must be in menu screen or in screen saver), if you have not done go back to tab 1-Application Update and press the "EXIT BOOTLOADER" button.
- If problem persist please Unplug and Re-plug the Lizard and then re-do all steps to apply again the 1-Application Update and then the 2-Flash update again.
- Alternatively you can check also the switch on the bottom of the case to ensure its in proper setting.



4. Lizard Accessory Connections

On the launch kit there are contained some accessories, on this section we will describe in more detail so you can know how to use them when needed.

Kit Contents:

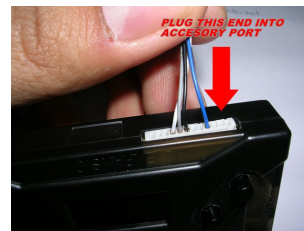
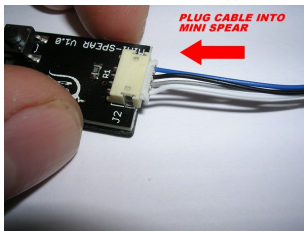
- Sata Cable (standard SATA cable)
- USB Cable (standard usb cable)
- Mini Spear with its cable to connect to lizard accessory port
- Powerdrop with power cable to drive
- Scorpion with its Wire set and 2 wires. (Not part of the standard kit)

General Precautions:

Use common sense, every time you plug an accessory to Lizard make sure the device is unplugged from the USB supply, that means **MAKE ALL CONNECTIONS** with device turned off

4.1 Mini Spear

This accessory connects to the Expansion Port on the Lizard, it allows you to read the keys over UART for older Liteon Drives (Liteon 74), it also work with any LT-UART enabled patched firmware. If you need to use the Mini spear please connect it as shown in the following images:



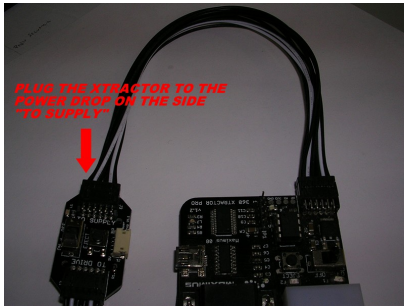
4.2 Power Drop with Long Power wire

This accessory can be used as an Extension of the current power solution you already have (Xtractor or others). And also can be used to allow you power the drive direct from your Console.

The accessory has a bypass power switch and an Eject button so it can be used as an extension, so you can just throw your Xtractor on the back of your desk and have more freedom to work without losing the power on-off features nor eject.

Please note the EJECT button needs to be PRESS AND HOLD in order to make the drive eject (like the old power dongle).

4.2.1 To use the Power drop as Extension connect in the following way:



4.2.2 To use the Power drop to take power from the console to do the flashing connect in the following way:

Caution: If you plan use your console to give power to the drive while doing the flashing, Please consider there is the possibility of the console detects the start without drive attached and maybe flag you for Live ban. If you want to feel safer about Live, then buy a proper power solution like Xtractor and use the Power Drop as extension. Please note power the drive from console is nothing new, some existing products as blaster already does the same, so this is not more or less safe than that.



4.3 Operate the Power Drop:

- Make sure the Switch on Power Drop is in OFF position
- Plug the drive on the other end of the Power Drop (the side labeled "TO DRIVE")
- Turn on your power supply (Xtractor or console)
- To power the drive just move the Switch on the Power Drop to ON
- If you need eject the drive PRESS AND HOLD eject (single presses will not work)

5. Using Lizard. Lets the Fun Begin

The detailed explanation on how to use Lizard for accomplish every task will be spanned into multiple Tutorials. Please go to the Help/Forum Section of our page for those individual manuals/tutorials.

<http://www.360lizard.com/website/forum.php>

Please Note the Final Tutorials are under construction, remember give a look often to get the latest versions.

6. Need Help ?

Sometimes the things don't went as we expected and we have lots of doubts, we are here to help you. We have available the following Help Resources:

- Written Tutorials/guides: The Help/Forum tab of the website contains the tutorials for the most common tasks using Lizard. Visit that section here:
<http://www.360lizard.com/website/forum.php>
- Video Tutorials: We have video tutorials on our Help/Forum section on our website too. We have every written tutorial backed up with a High Res Video. Alternatively there are tutorials already uploaded made by other customers in Youtube.
- Forum: We have a dedicated forum thanks to the people of Console Addiction, here you can come and post your doubts, we will do our best to Answer, the link to access is:
<http://www.consoleaddiction.com/forum/21-maximus-360-lizard/>
- IRC on Efnet: We have setup an IRC channel on Efnet, the channel is #maximuslizard, you can access that channel from inside the Lizard Toolbox Application or also from our Help/Forum section on our website <http://www.360lizard.com/website/forum.php>
- Email: At last if none of the options above worked for you to solve your problem, feel free to contact us at carranzafp@hotmail.com with the subject "Support with Lizard" and we will take care of the problem and reply as fast as we can.

7. We have not finished yet !!

Lizard is a work in process in constant evolution, please make sure visit our website often to get the latest news on the product, one of the best ways to keep updated of the Important updates is following us in twitter:

http://twitter.com/#!/maximus_lizard

